



**Panoramic
Kobe City Views
Luxury Condominium**
at CITY TOWER
Sannomiya, Kobe City

Mash Co., Ltd.
3-11, Fujishirodai 2 chome, Suita City, Osaka Prefecture
Osaka Prefecture Governor License (2) No. 58189
Main Line (Japanese): 06-6369-7347
English and Chinese Service Hotline : 090-9879-4615

Property Information

Address: 4-1-3 Asahidori, Chuo Ward,
Kobe City, Hyogo Prefecture

Completion Date: January 2013

Structure: Reinforced Concrete

Total Units: 640

Floor/Total Floors: 18th floor / 1 basement floor, 54 floors
above ground

Exclusive Area: 81.68 m²

Construction: Sumitomo Realty & Development

Management Company: Sumitomo Realty &
Development Building Service Co., Ltd.

Management Type: Fully entrusted

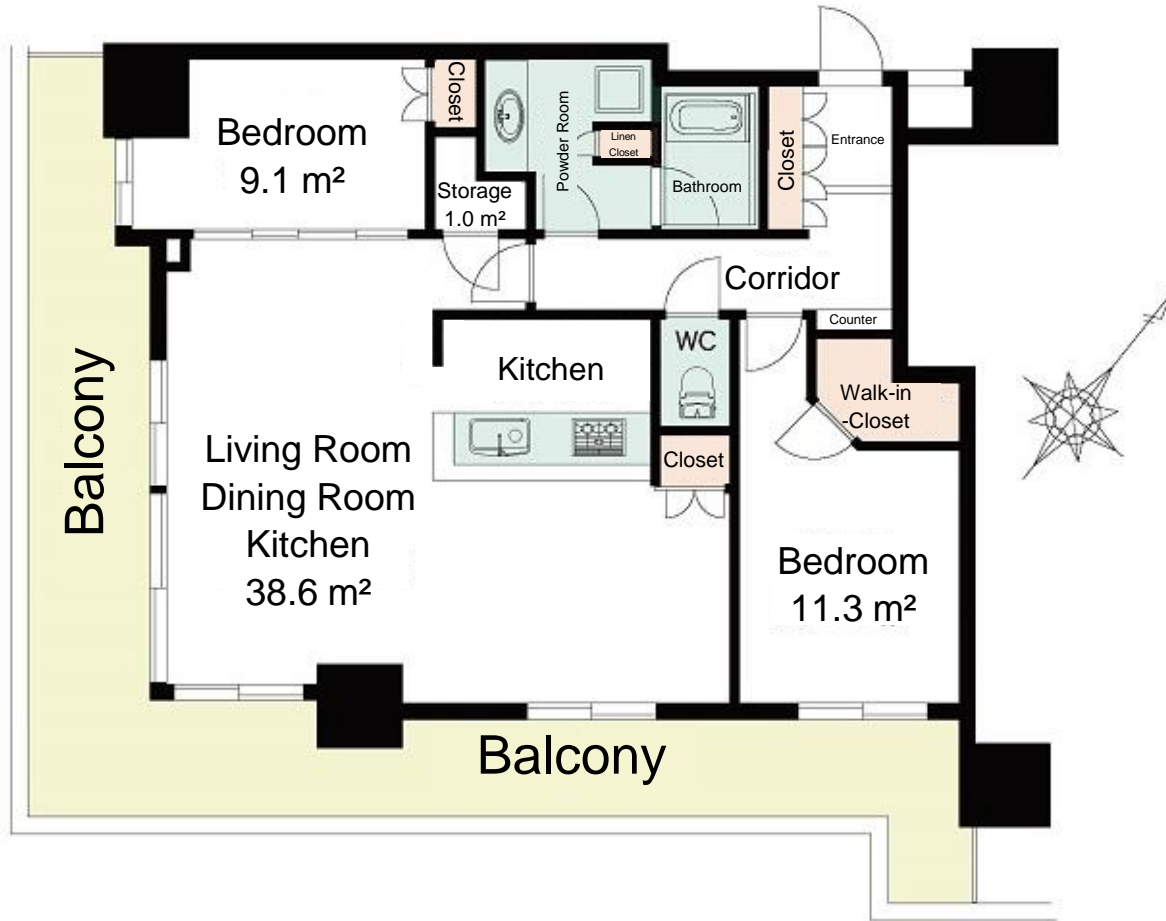
Land Rights: Freehold

Access:

- Approx. 6-minute walk to Sannomiya Station on the Kobe Municipal Subway Yamate Line
- Approx. 6-minute walk to Kobe-Sannomiya Station on the Hanshin Main Line
- Approx. 4-minute walk to Sannomiya Station on the JR Tokaido Main Line



Room Plan



Price: 115,000,000 yen

Layout: 2LDK (2 rooms + Living/Dining/Kitchen)

Main Orientation: Southwest

Balcony Area: 33.35 m²

Management Fee: 13,900 yen/month

Repair Reserve Fund: 12,300 yen/month

Parking: Availability must be confirmed

Current Status: Occupied

Closing: Negotiable

Remarks:

- 24-hour on-site management
- 24-hour garbage disposal available on each floor
- Pets allowed

Surroundings:

"Hankyu OASIS Kobe Asahidori Store: 2-minute walk

"Ikutagawa Park " : 6-minute walk

"Kobe Municipal Chuo Elementary School" : 9-minute walk